

V500



For the specialised mixing of:

- Wet and dry concrete
- Refractory materials
- Powders
- Plaster
- Shotcrete
- Foundry materials

Features:

- Pan wall and floor lined with easily replaced wear segments
- 5-bladed, sprung mixing star with inner and outer wall scrapers
- Driven in an anti-clockwise direction by a 15kW geared motor drive
- 400V 3-phase AC mounted below the pan
- Hand-lever operated segmented bottom discharge gate
- Pushbutton stop/start with safety grid
- Limit switch for automatic cut-out
- Complete with isolator switch

Optional: Tilting loader skip

- 500 litre capacity tilting type or bottom discharge for low dust emission
- 4kW winch drive with flanged electro-magnetic break
- Rope drum with upper and lower limit switches
- Upper emergency limit switch and panel

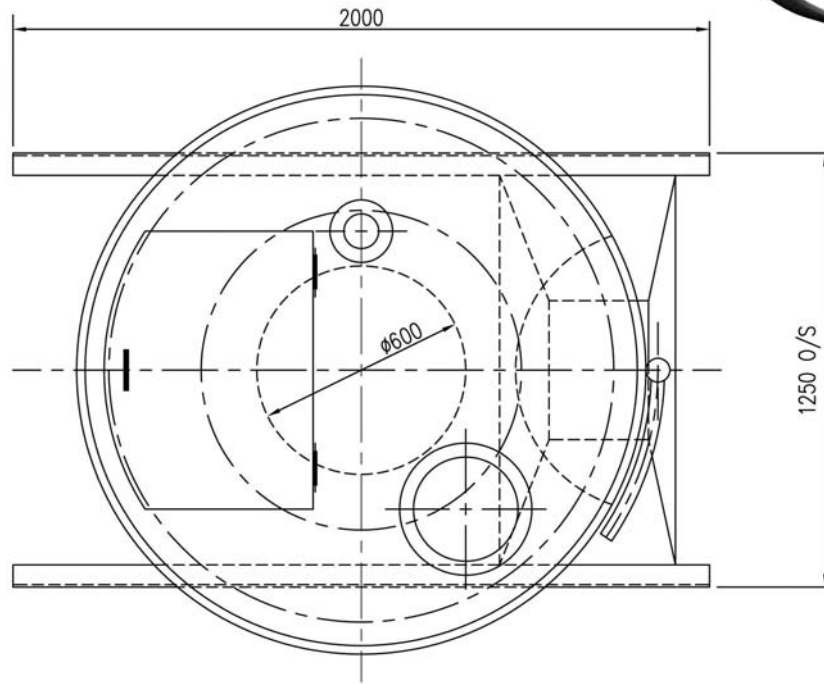


V500 with optional dust cover and inlet chute

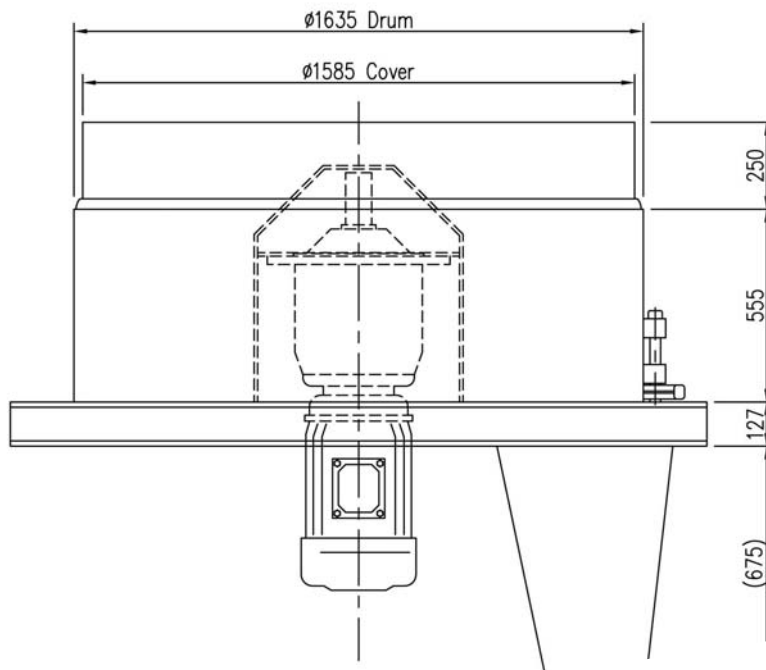


Granite Street, Jet Park
Boksburg, South Africa
Tel: 086100-PMSA (086100-7672)
Tel: +27 (0) 11 397 3754
Fax: +27 (0) 11 397 4721
Website: www.panmixers.co.za
E-mail: sales@panmixers.co.za

Top View



Side View



Machine Specifications	V500
Pan Diameter	1 635mm
Pan Wall Height	555mm
Dry Filling Capacity	500 litres
Wet Mixing Capacity	375 litres
Electric Drive	15kW

NOTE: All equipment is manufactured by PMSA in South Africa. All work carries a 6-month guarantee against faulty material and workmanship. Our professional and experienced technical support team will provide you with the assistance you require; a comprehensive spare parts facility enables immediate dispatch worldwide.